



Quick Guide

Ver. 5.1
Release date: VII 2024
Soft:
Main module: v1.1.3
MCU: v1.1.3

Works with app

Powered By

GET IT ON
Google Play

Available on the
App Store

Hey Google

works with
alexa



Producent:
Engo Controls sp. z o.o. sp. k.
43-262 Kobielice
4 Rolna St.
Poland

www.engocontrols.com

Technical specification

Power supply	5V DC micro USB
Communication	Wi-Fi 2,4GHz
Dimensions	72 x 72 x 21 mm

SAFETY INFORMATION:

Use in accordance with national and EU regulations. Use the device only as intended, keeping it in a dry condition. The product is for indoor use only. Please read the entire manual, before installation or use.

INTRODUCTION

EIRTXWIFI is a universal product that can replace a traditional remote control. It allows you to conveniently control various infrared receiving devices, such as TV, decoder, air conditioner, etc. It supports local and remote turning on/off of devices. In addition, using the ENGO Smart mobile app, you can create scenes to, for example, automatically turn on/off the TV or air conditioner (only when Wi-Fi is available).

Product features:

- Wi-Fi 2.4 GHz communication standard
- compatibility with the ENGO Smart application (in Tuya Cloud technology)
- device works with most Irda devices on the market
- universal infrared remote control
- minimalistic design
- łatwość obsługi

Product Compliance

This product complies with the following EU Directives: 2014/53/EU, 2011/65/EU.

Installation:

Installation must be performed by a qualified person with appropriate electrical qualifications, in accordance with the standards and regulations in force in a given country and in the EU. The manufacturer is not responsible for non-compliance with the instructions.

WARNING:

For the entire installation, there may be additional protection requirements, which the installer is responsible for.

Explanation for LED indicator

LED status	Device status	Explanation
LED is flashing	The device is in pairing mode	This mode is activated by holding the Reset button (10 sec.)
LED is off	1. The device is connected to the Internet 2. No power supply	1. Normal work mode 2. Connect the device to a power supply
LED lights up	1. The device is not connected to the Internet 2. The device is in learning mode	1. Check network connection quality or if the router is connected correctly 2. When the device is correctly connected to the network, it goes into learning mode. When the process is successful, the yellow LED will turn off

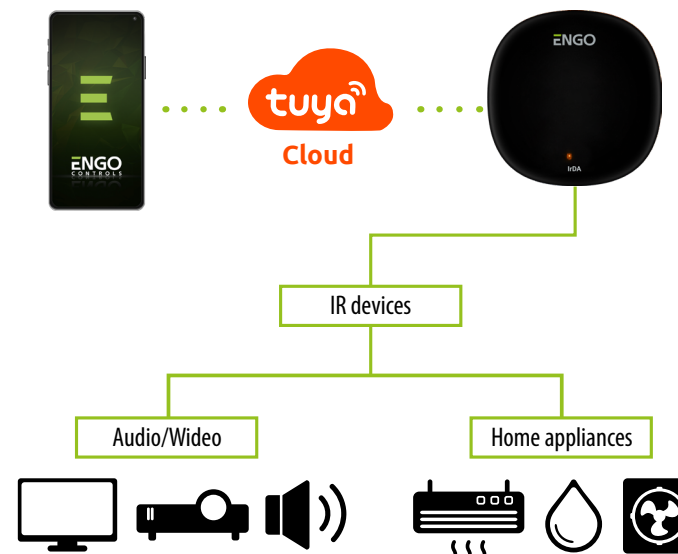
EIRTXWIFI installation



Warning!

Connect the EIRTXWIFI remote control to a 230V AC power supply, use the supplied plug and USB cable only. The remote control must be placed in the same room as the controlled devices. EIRTXWIFI sends an infrared signal - lack of architectural barriers is required for proper control of the devices.

Device application with the ENGO APP and devices

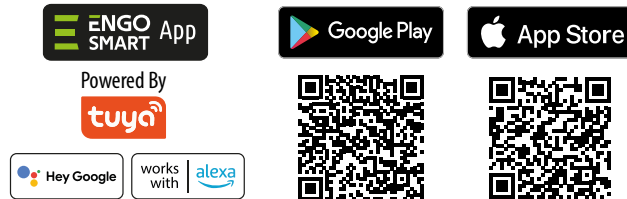


Installation of the IR remote control in the APP

Make sure your router is within range of your smartphone. Make sure you are connected to the Internet. This will reduce the pairing time of the device.

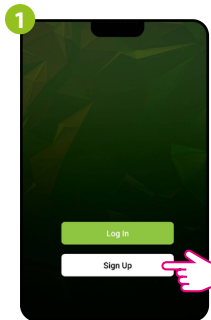
STEP 1 - DOWNLOAD ENGO SMART APP

Download the ENGO Smart app from Google Play or Apple App Store and install it on your smartphone.

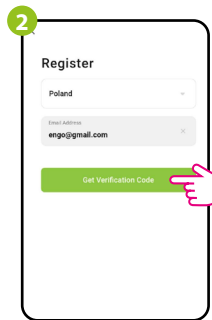


STEP 2 - REGISTER THE NEW ACCOUNT

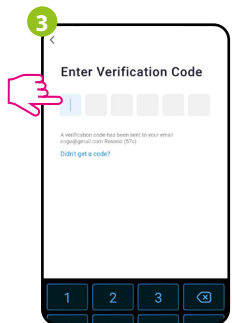
To register a new account, please follow the steps below:



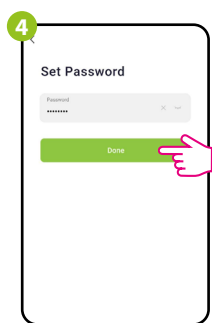
Click „Sign Up” to create new account.



Enter your e-mail address to which the verification code will be sent.



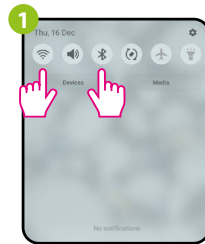
Enter the verification code received in the email. Remember that you only have 60 seconds to enter the code!



Then set the login password.

STEP 3 - CONNECT THE IR REMOTE CONTROL TO WI-FI

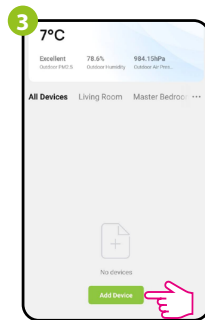
After installing the app and creating an account:



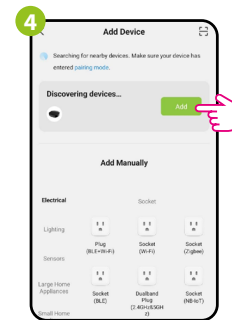
On your mobile device, make sure the ENGO Smart has access to permissions (Location, Bluetooth, Nearby devices). Then turn on Bluetooth and Location. Connect to 2.4GHz Wi-Fi network to which you want to assign the device.



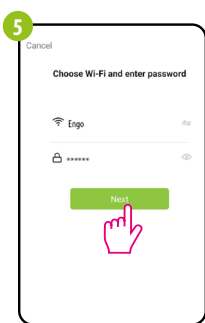
Make sure the device is powered on. Using the PIN included, press and hold the RESET button for 8 seconds until LED starts flashing. The pairing mode is enabled.



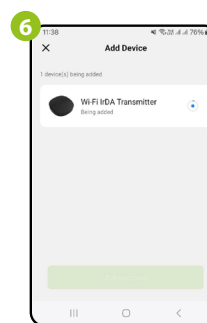
In the app, select: „Add Device”.



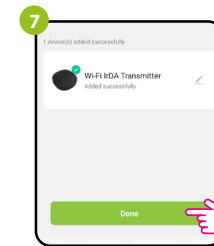
After finding the device, go „Add”.



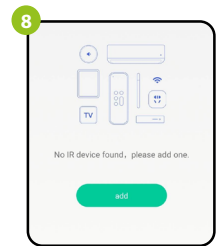
Select the Wi-Fi network in which the device will operate and enter the password of this network.



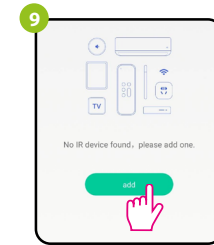
Wait for the app to configure the device with the selected Wi-Fi network.



Go „DONE”.



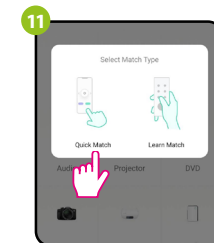
The IrDa transmitter has been installed and displays the main interface.



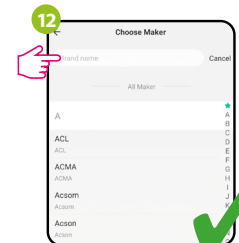
You can then pair up any device that supports infrared remote control. Click „Add”.



Choose the device type which you want to connect the IR remote control with.



Choose „Quick match”.



Find the device brand from the list and follow further instructions.

Reset of the remote control

To restore the default settings of the device, press RESET button and hold it for about 10 seconds - until the LED lights up. The IR remote control will then reset to the default (factory) settings and the pairing process will begin.

